



Metodologia di progettazione in Permacultura e applicazione in un Permaculture Demonstration Site

EC  ntACT



otto ¹¹per ^{ITALY}  mille
WALDENSIAN CHURCH

Camel Race in Sharm-el-Sheikh @ 2000

ra Jean Zito



HABIBA ORGANIC FARM



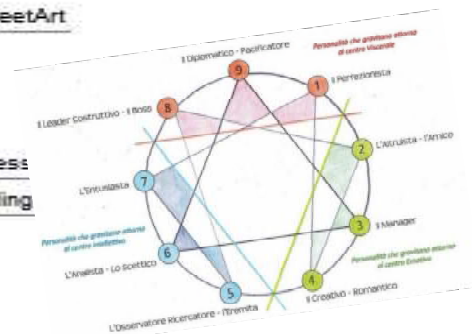
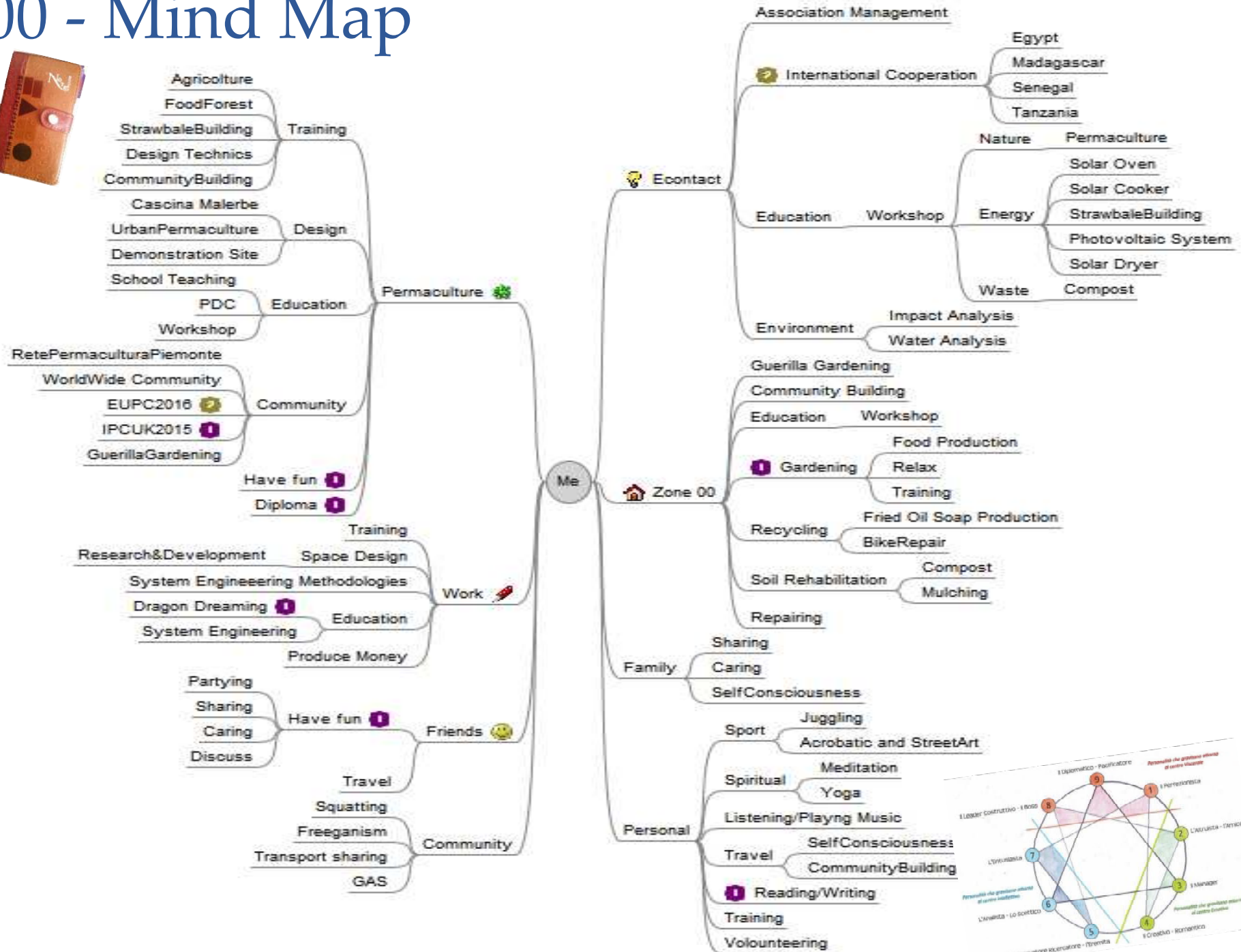
Zone 00 - Active Learning Path

Zone 0 - Satellite Projects

Zone 1 - Methodology

Zone 2 - Permaculture Demonstration Site

00 - Mind Map



COOPERAZIONE INTERNAZIONALE e PROGETTAZIONE

- Partecipiamo a progetti di Cooperazione Internazionale offrendo consulenza e collaborazione in ambito tecnico nel campo delle energie rinnovabili, delle risorse idriche e dei rifiuti;
- Promuoviamo e partecipiamo a progetti, iniziative ed eventi a livello locale nel campo delle energie rinnovabili, della difesa dei beni comuni, della riduzione dei rifiuti e la protezione delle risorse



COMUNICAZIONE AMBIENTALE



RIVER
EYES
TORINO

- Sensibilizzazione e informazione sull'ambiente e le sue risorse, beni comuni, tecnologie appropriate, educazione ambientale, consumo critico, permacultura, cooperazione, disuguaglianze sociali.

FORMAZIONE & AUTOCOSTRUZIONE

Consulenza e coprogettazione ambientale per differenti realtà in modo sostenibile e partecipato (ecovillaggi, comunità, scuole)

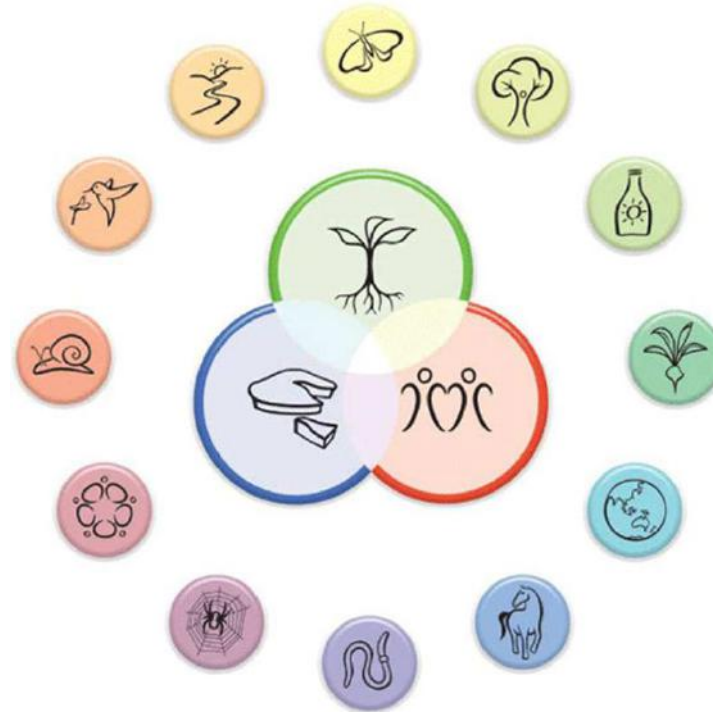
Laboratori per scuole (elementari, medie e superiori)

Realizziamo Corsi di Autocostruzione - Autoproduzione - Formazione - Progettazione.





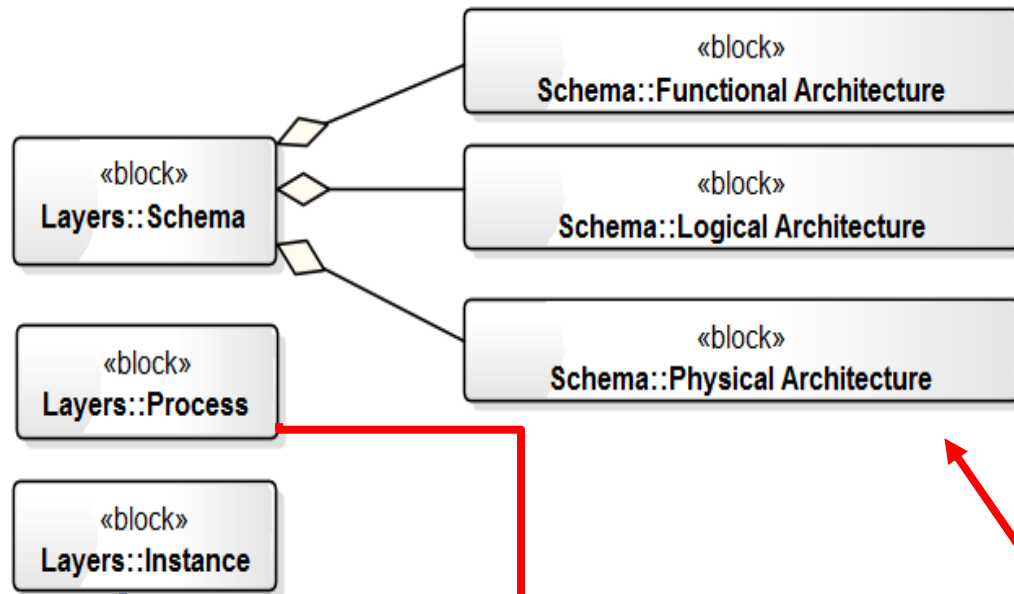
Methodology



Ethics and Principles
Approach
Tools and Language
Deliverables

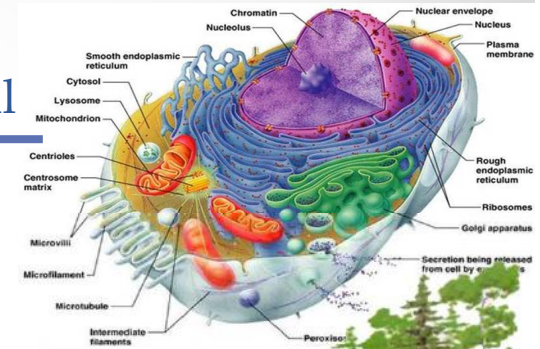


Model Based Approach

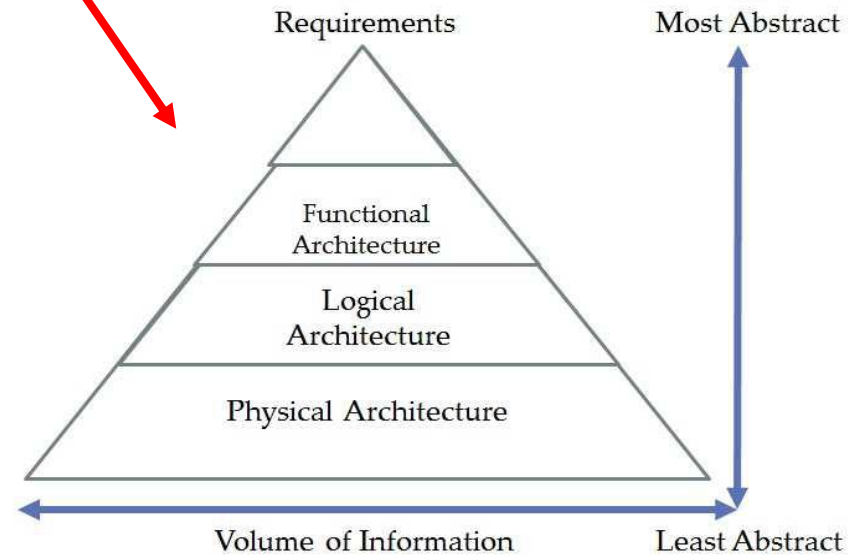
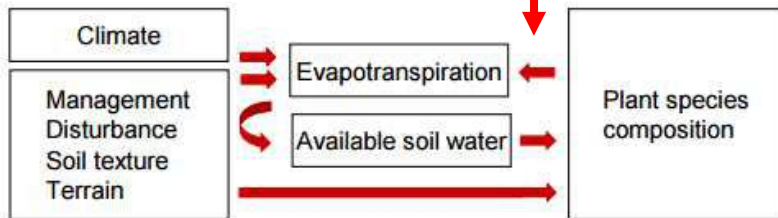


Functional
Pattern

Spatial
Pattern

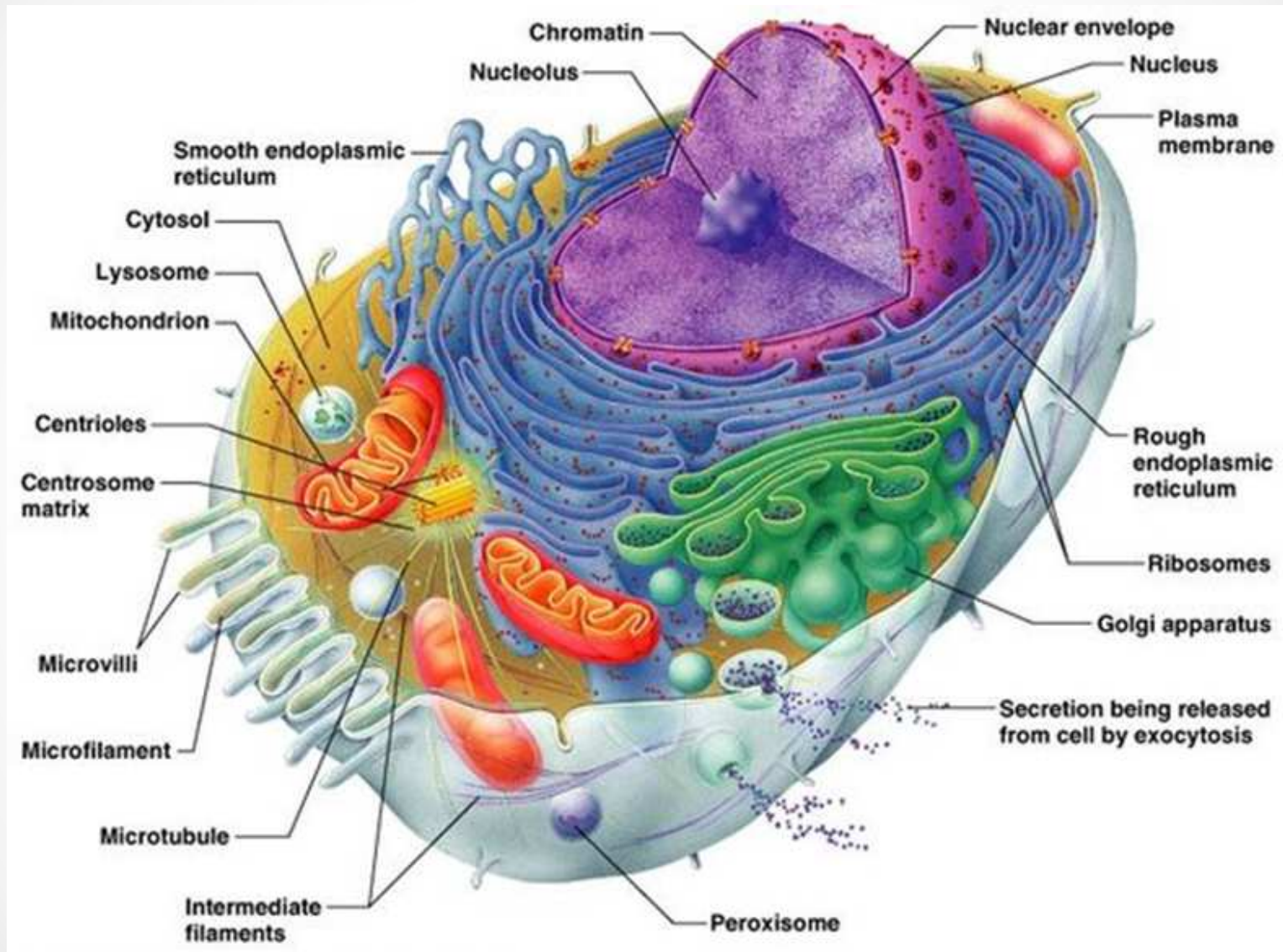


Sinai Egypt





Cell Functional Pattern



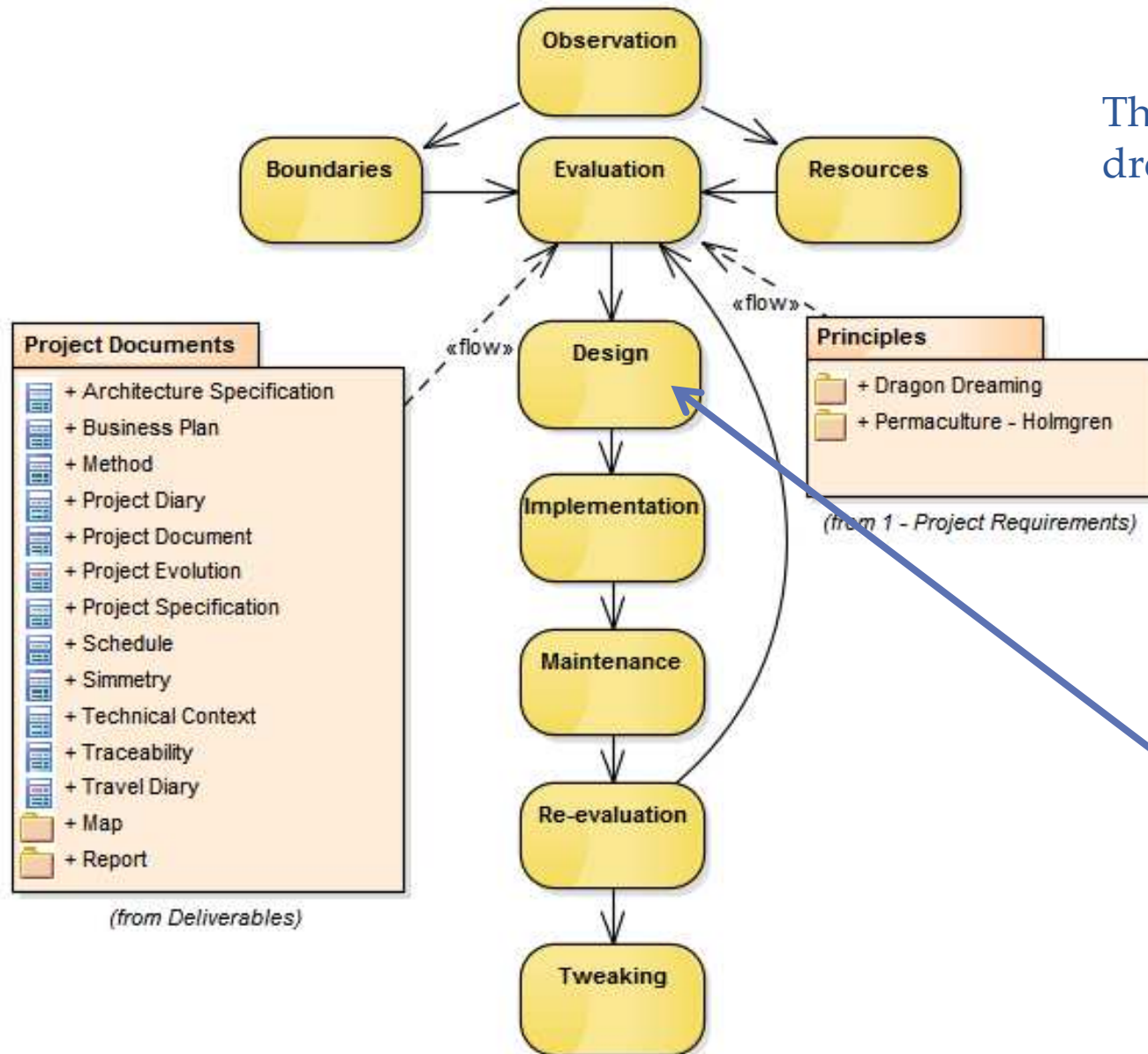
Bio Mimicry



Functional Model

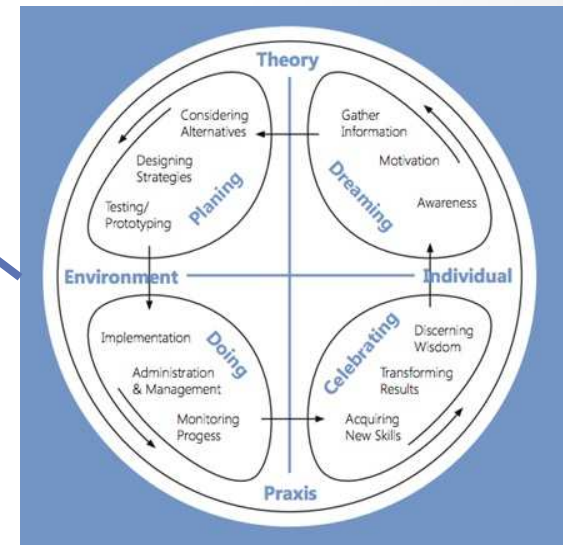


Process - O'BREDIMET



The Evaluation merges the dream to.....

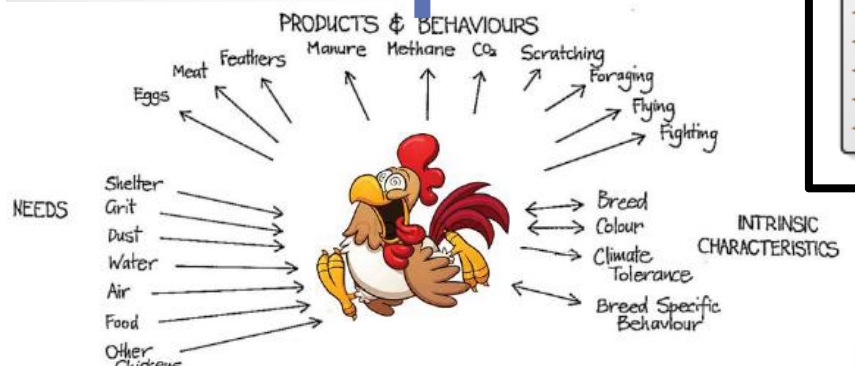
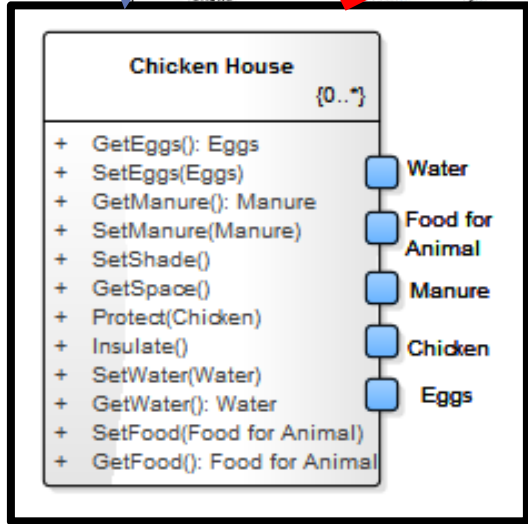
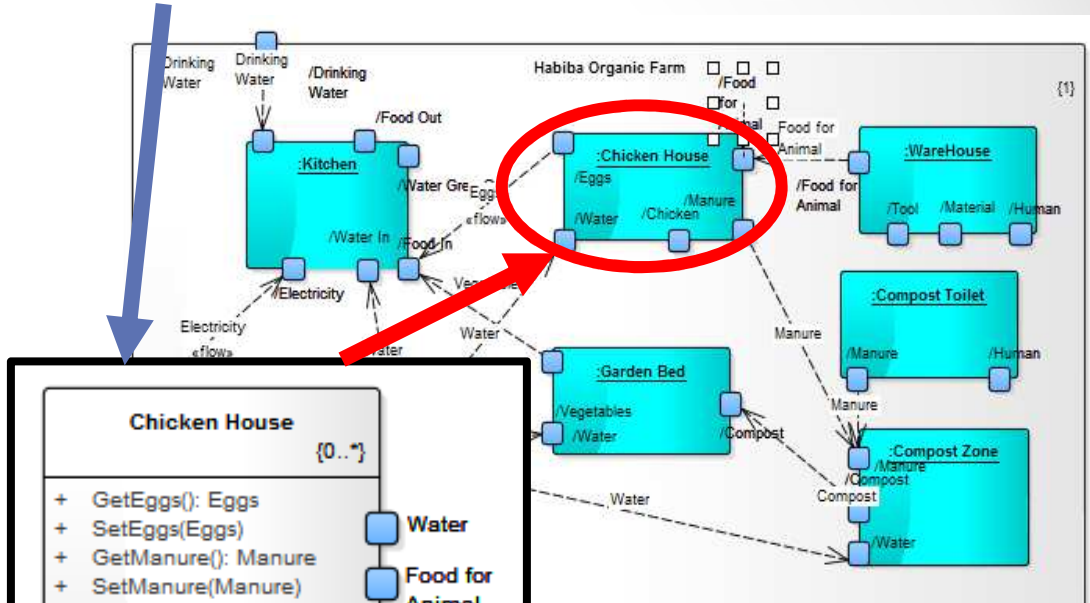
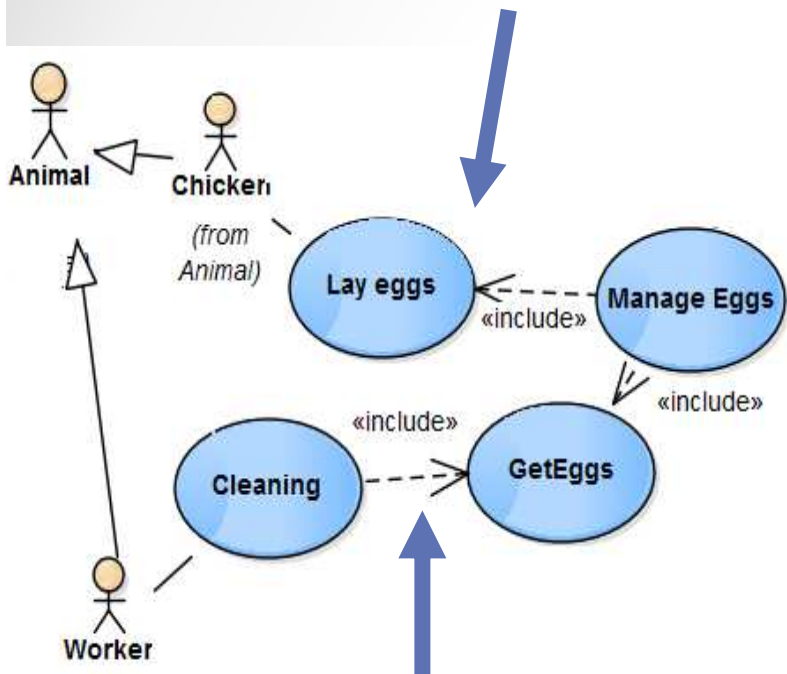
- Scope
- Objectives
- Actions
- Elements



Dragon Dreaming



Architecture Specification



Functions supported by many Elements



AFFIDABILITA'

FAIL-SOFT

FAIL-SLOW

FAIL-SAFE

FAIL-BACK

FAIL-FORWARD

FAIL-FAST

FAIL-STOP



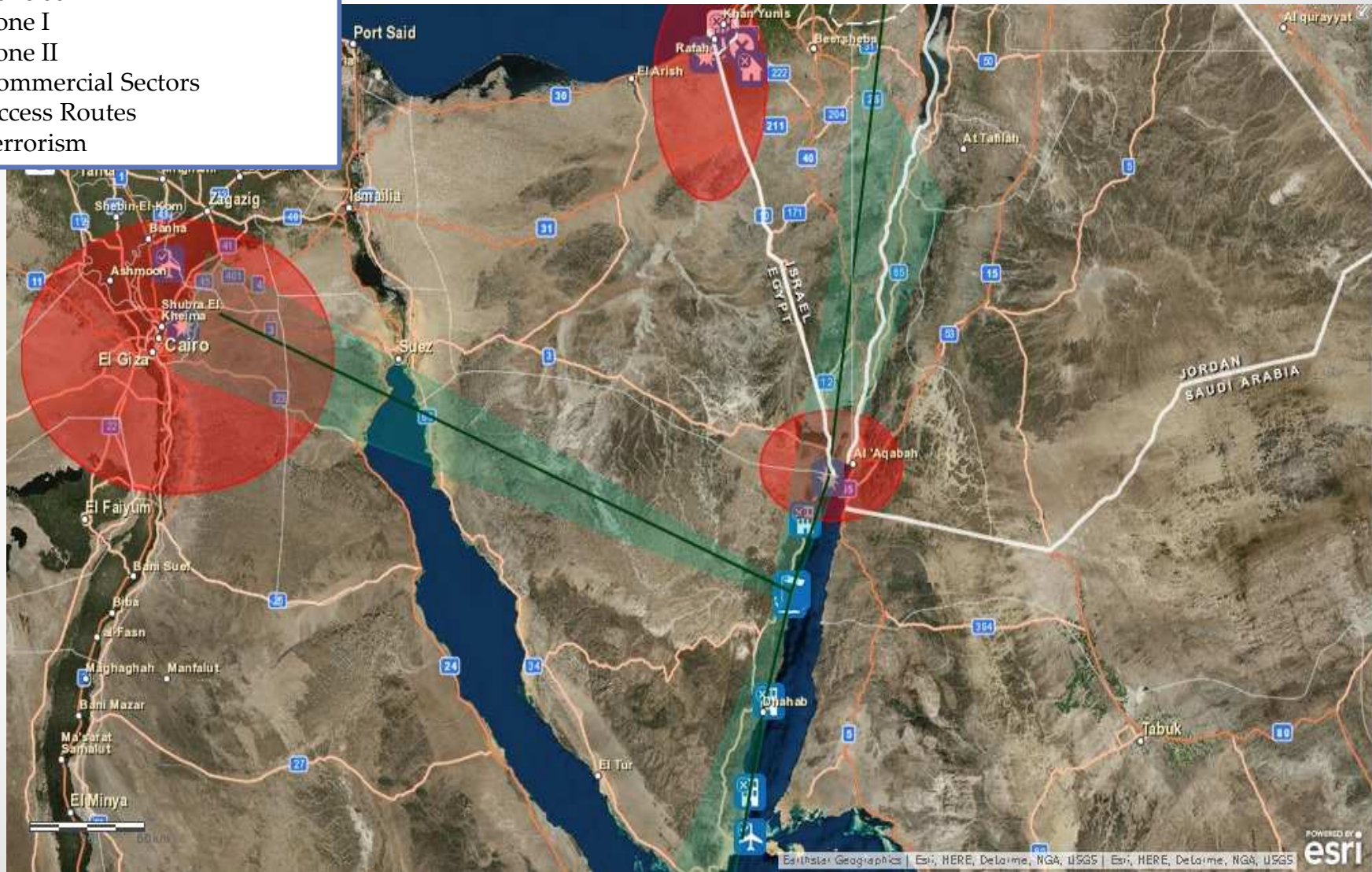
Project Cultura Permanente - Sinai





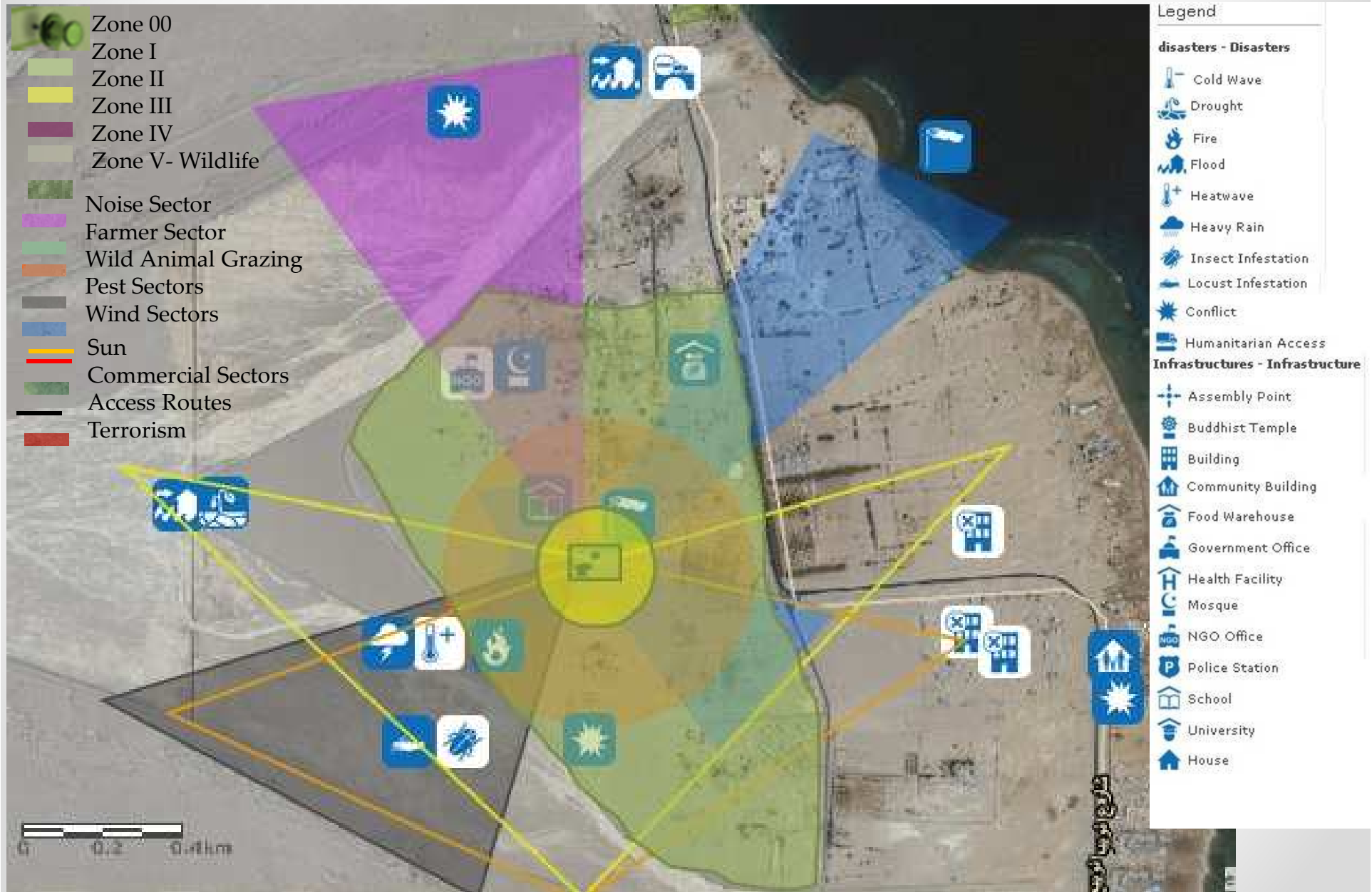
Zones and Sectors

- Zone 00
- Zone I
- Zone II
- Commercial Sectors
- Access Routes
- Terrorism





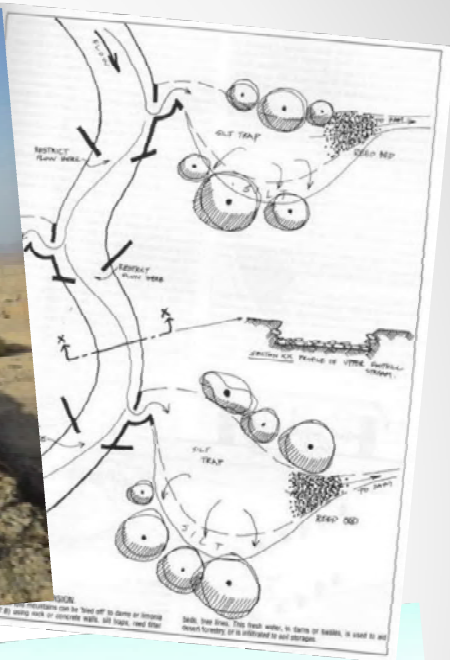
Zones and Sectors





Project Diary

FAIL-FAST



RIDGES CREATED BY PLOUGH





Project Diary

FAIL-SAFE

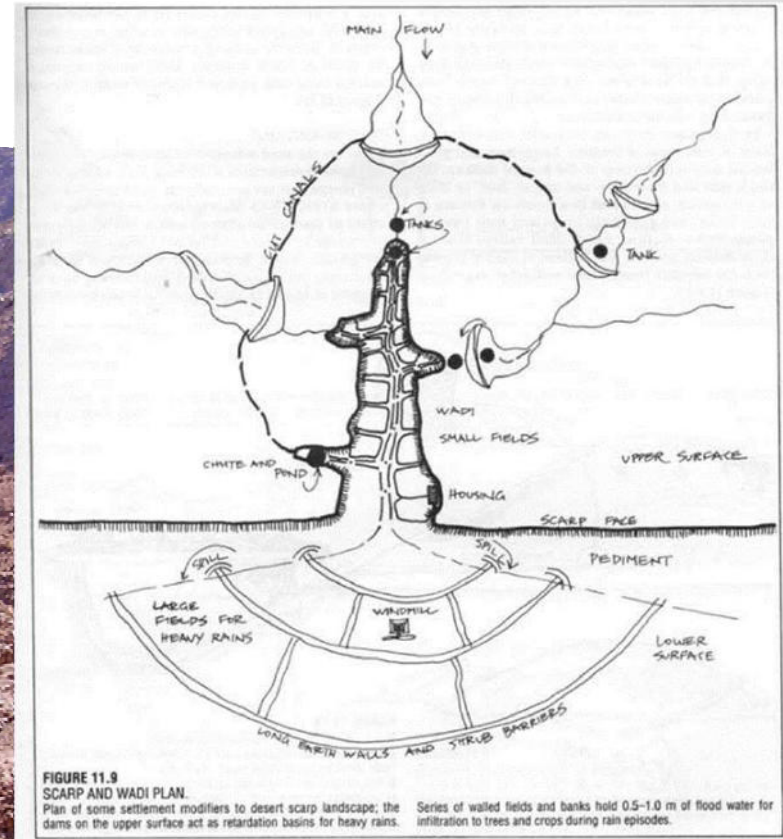
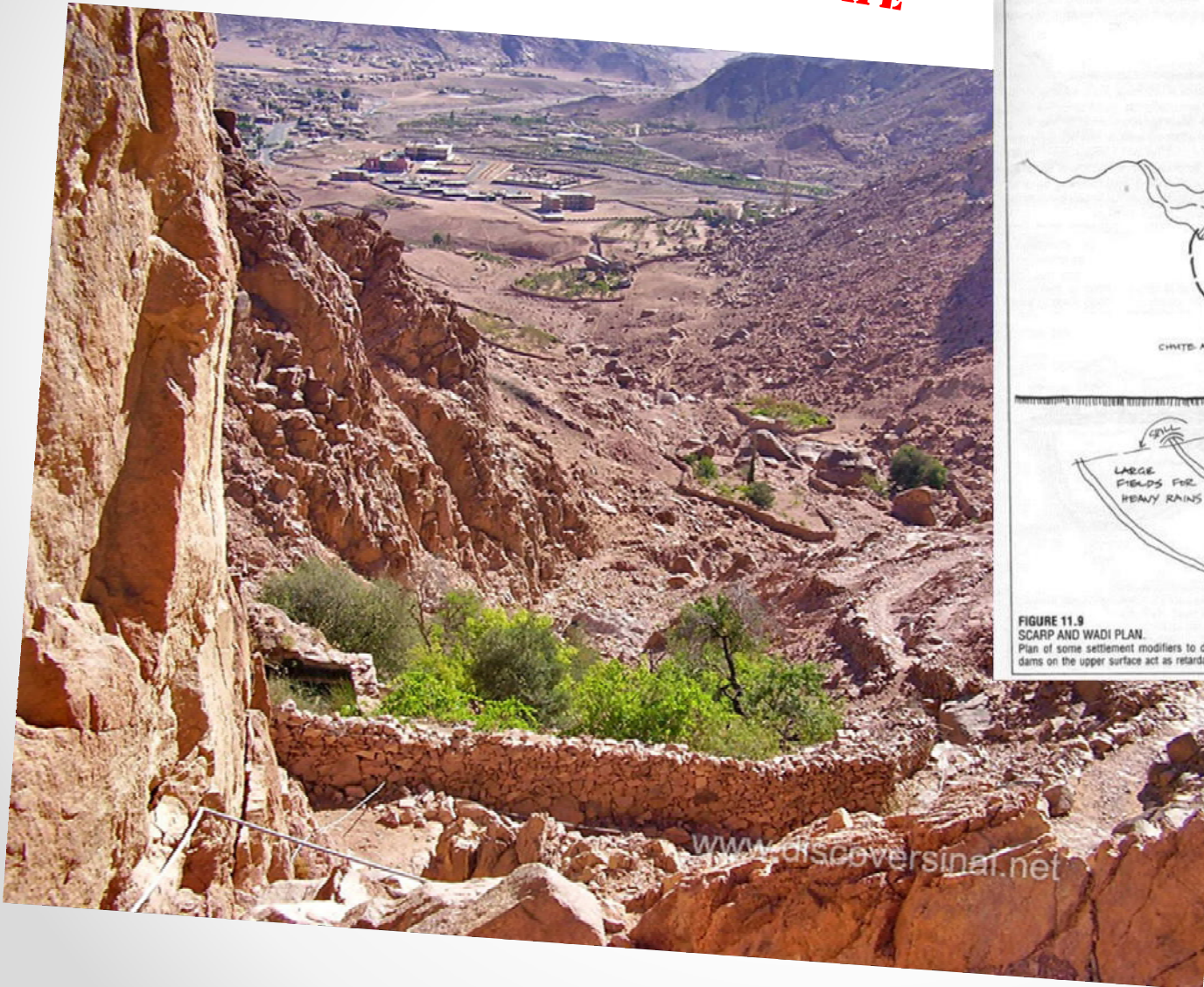


FIGURE 11.9
SCARP AND WADI PLAN.
Plan of some settlement modifiers to desert scarp landscape; the Series of walled fields and banks hold 0.5-1.0 m of flood water for infiltration to trees and crops during rain episodes.

www.discover Sinai.net



Habiba Organic Farm

Habiba is an initiative to build community resilience in South Sinai through

- Sustainable farming
- Agro tourism (1000 volunteers since 2007)
- Education and research
- Sinai Palm Date Foundation



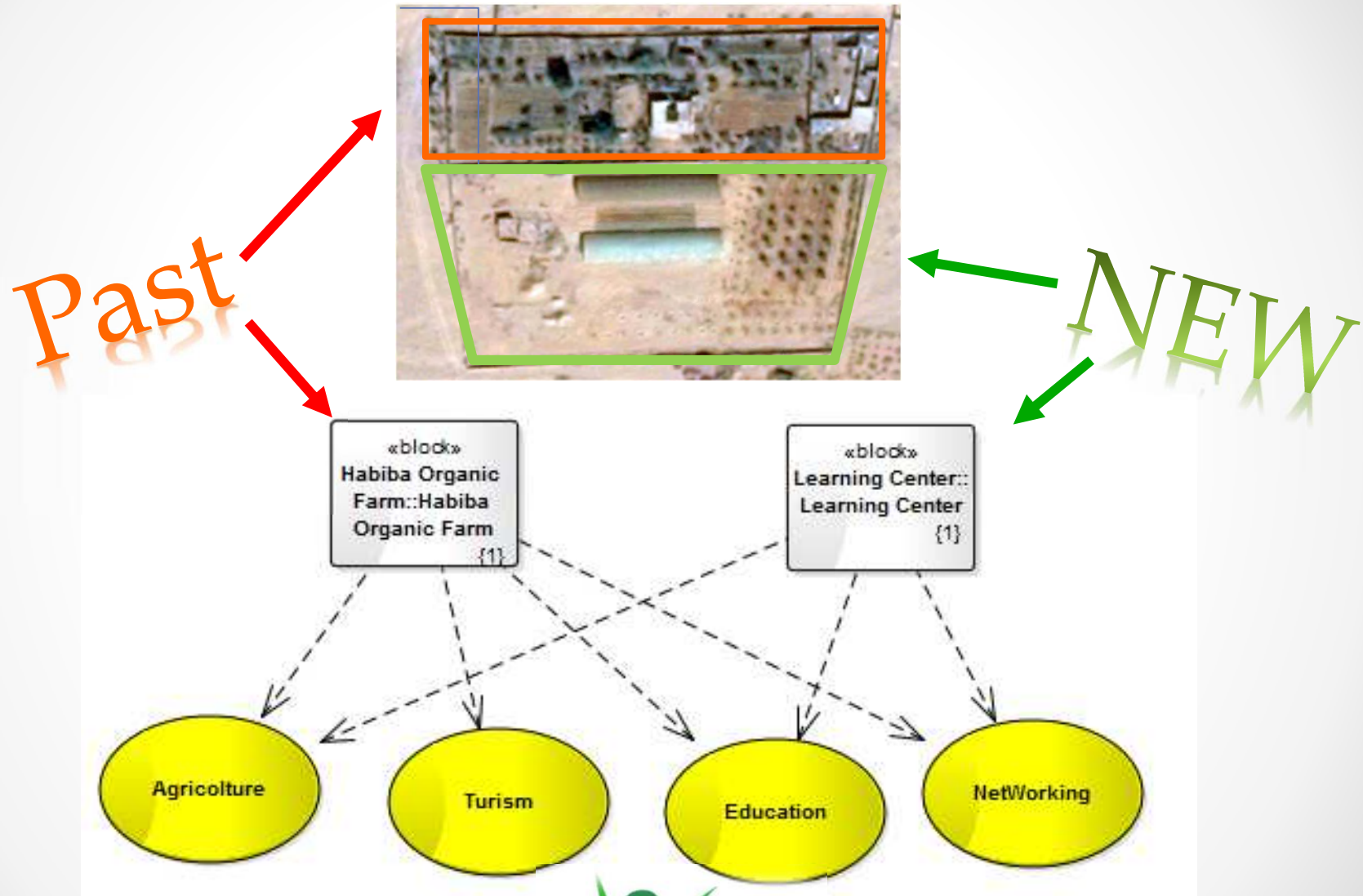
- To diversify Bedouin livelihoods away from dependency on the tourist sector,
- To adapt to realities of climate change that are being felt more and more throughout the Middle East.



Organic Farming
AgriTourism Education
Agri Business



Habiba Organic Farm





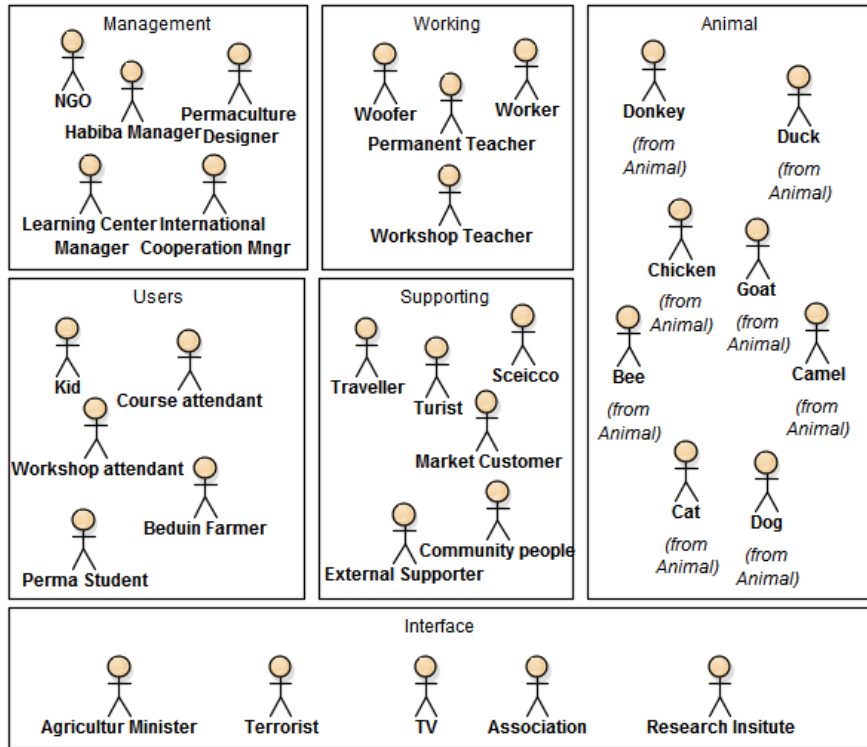
Permaculture Demonstration Site

Descrizione del progetto	Habiba Organic Farm, supporta agricoltura biologica e valorizza il territorio, le tradizioni e la cultura locale. Attraverso la cultura, la formazione, la permacultura e l'agricoltura si vuole incentivare la riappropriazione degli strumenti opportuni per saper vivere e valorizzare le potenzialità locali
Contesto	Il crollo del turismo, assenza di industrie e la quasi totale assenza di poli artigianali Tradizione nomadica delle tribu Beduine con tradizione di pastorizia, la pesca Tradizione di educazione orale
Obiettivi	<u>To Increase the Water and Food capacity</u>
Risultati Attesi	Permaculture Demonstration Site, Education , International Network
Durata del progetto	4 years
Partner o collaboratori	ECONtACT, Habiba, Byspokes, ONG Agricolture Co-operative
Settore prevalente	Agriculture, Turism, Education,, Network
Luogo di realizzazione	Nuweiba, South Sinai, Egypt
Numero di persone che beneficeranno	2000
Costo totale del progetto	40K
Fonti di finanziamento	Tavola Valdese, Fundraising, Workshop, Investment, NGO partnership



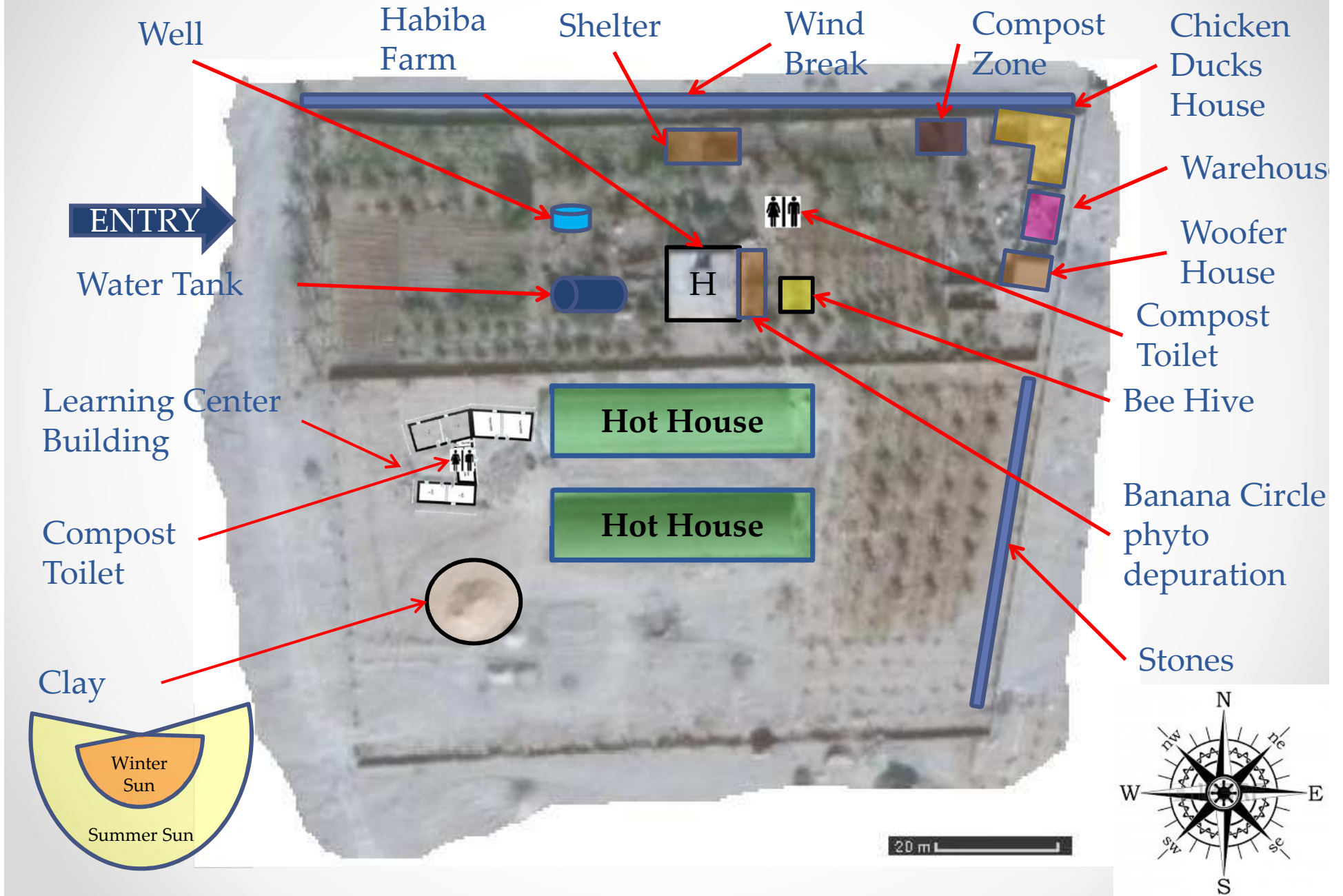


Habiba 2013-2017





Context – Infrastructures



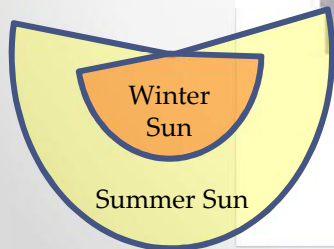


Plants & Trees

Plants

- Cucumber
- Mangold
- Beetroot
- Desert Melon
- Potatoes
- Asparagus
- Bouganville
-
-
-

Rock Garden



Trees

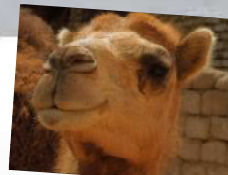
- Casuarina
- Moringa Tree
- Chris Jujube
- Almond
- Date palm
- Olive tree
- Acacia Saligna
- Banana tree

Bush

- ★ Ephedra Aphilla
- ★ Salt Tree
- ★ Rosemary
- ★ Peppermint

Topic

- Trench
- Banana Circle
- Rock garden
- mulch

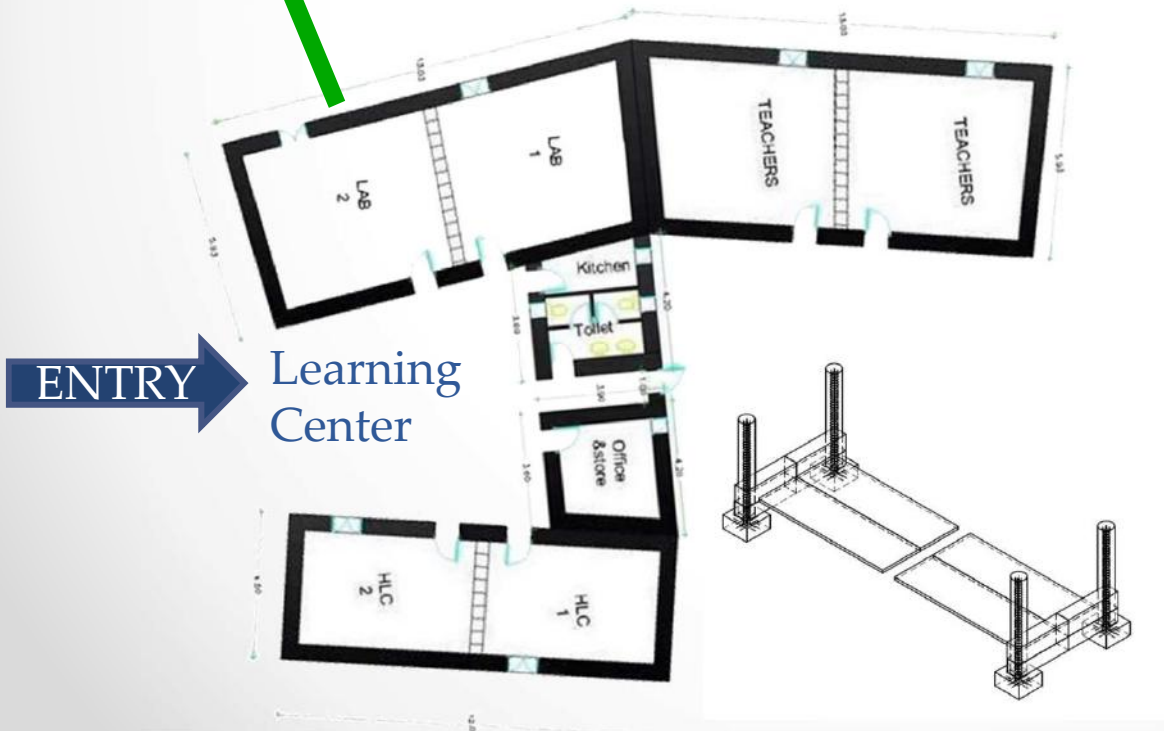
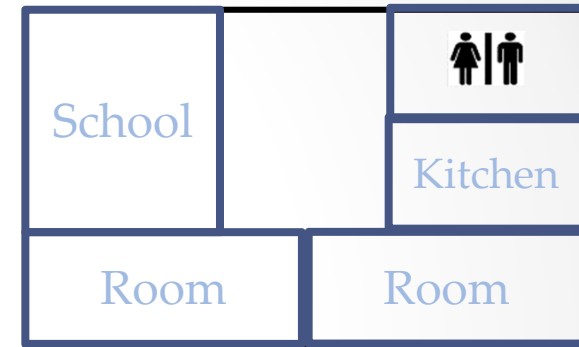


20 m

Habiba and Learning center



Habiba Farm



ENTRY

Learning Center



Priority Analysis



FAIL-SOFT
FAIL-SAFE

Benefit

Needs and Concerns

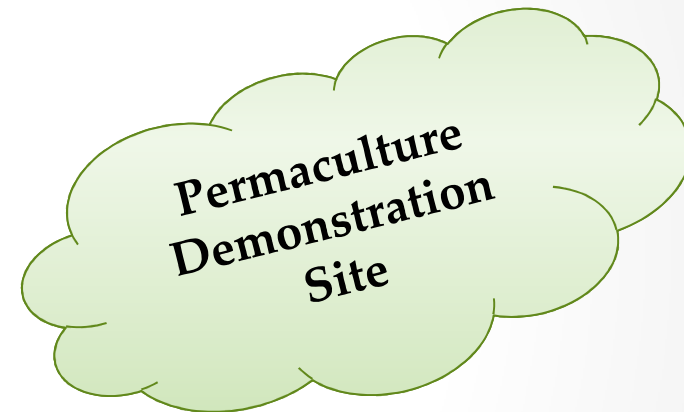
Water salinity

Organic Matter

- Poor soil around the guesthouse
- The outside kitchen must be redone properly
- The brick walls/fence need to be covered
- Water tank and reservoir are not covered
- The south façade is too exposed to fierce sun surface
- Lack of companion planting and guilds
- Unused area near the water reservoir

Priority Recommendations

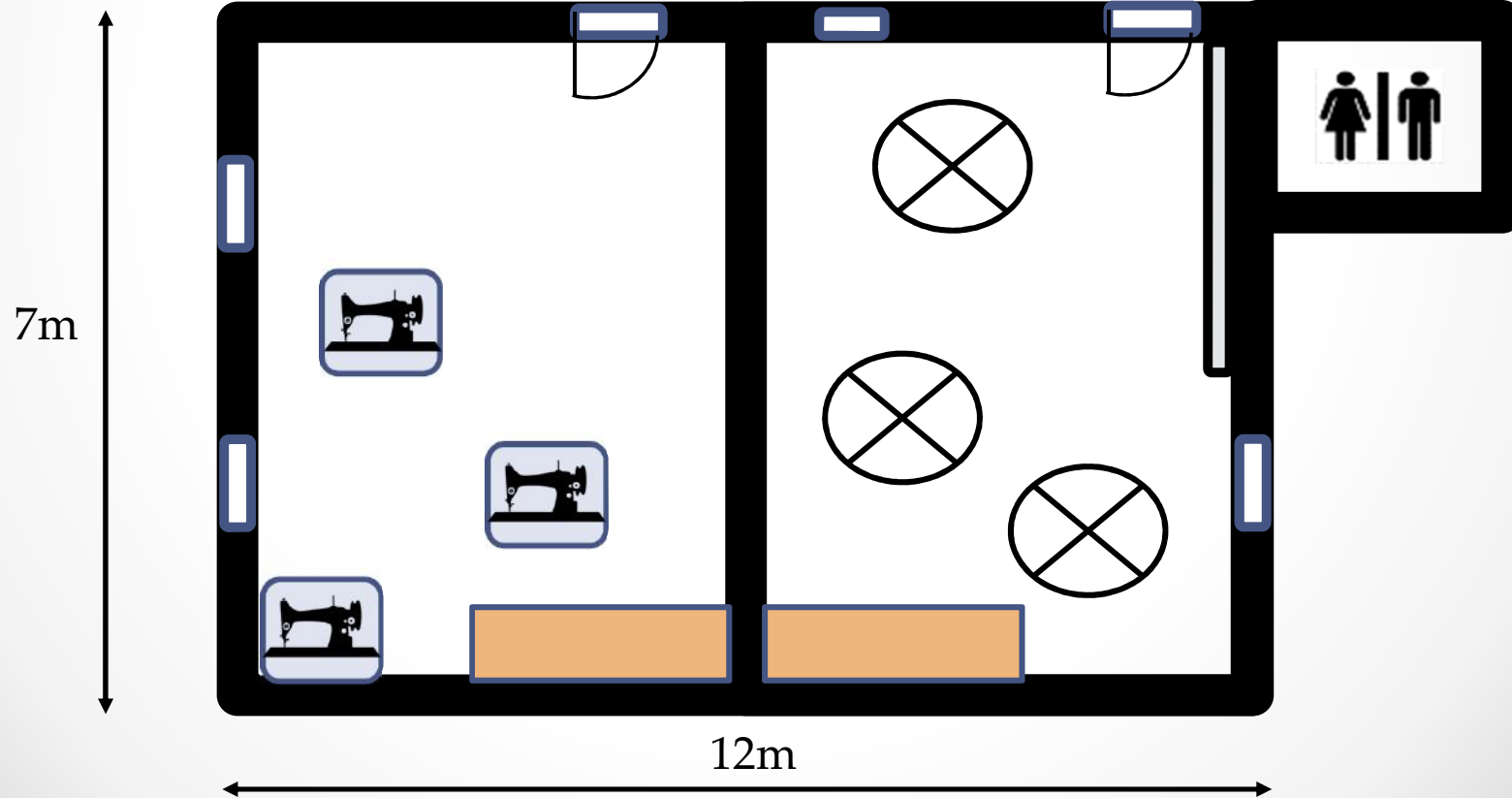
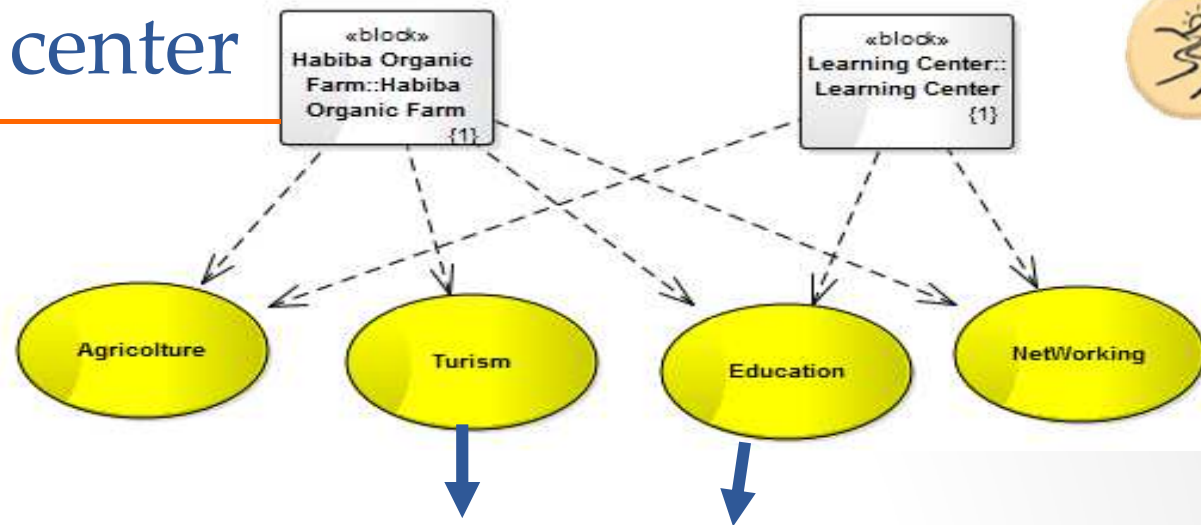
- 2 - Moving outdoor toilet
- 1 - Covering water tank with palm leaves
- 2 - raising chicken and other animals in compost area
- 3 - Covering brick walls with climbing desert bushes
- 4 - Building guilds with companion plants around the guesthouse
- 3 - Using solar heaters and solar pumps
- 5 - Opening up windows on south wall for better ventilation and air circulation
- 2 - Building trenches, terraces and swales to distribute, retain and save water



Cost



Learning center



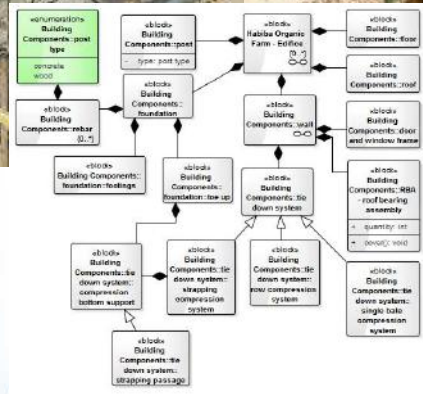






Building







Learning Center





Rock Garden

FAIL-FAST



CLEARED PROJECT SITE



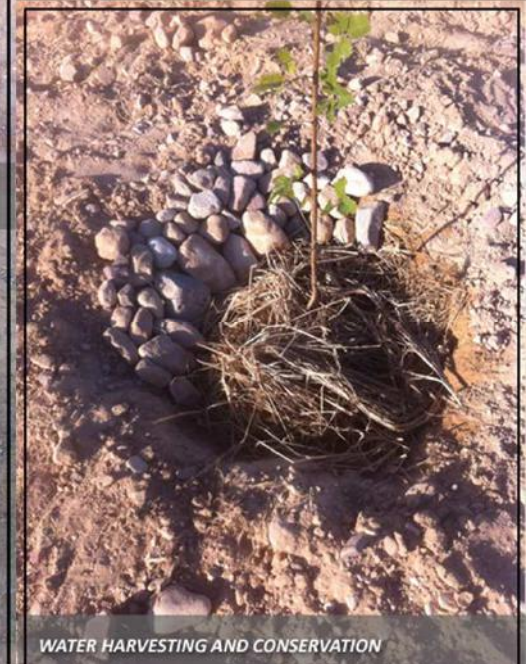
COMPOST USED TO BUILD SOIL



IN-SITU WATER HARVESTING



DRIP IRRIGATION SYSTEM INSTALLED AROUND PIONEER SPECIES



WATER HARVESTING AND CONSERVATION

Rock Garden

FAIL-FAST





Water - Tank & Pump

Pump

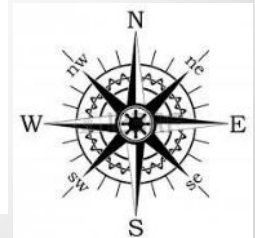
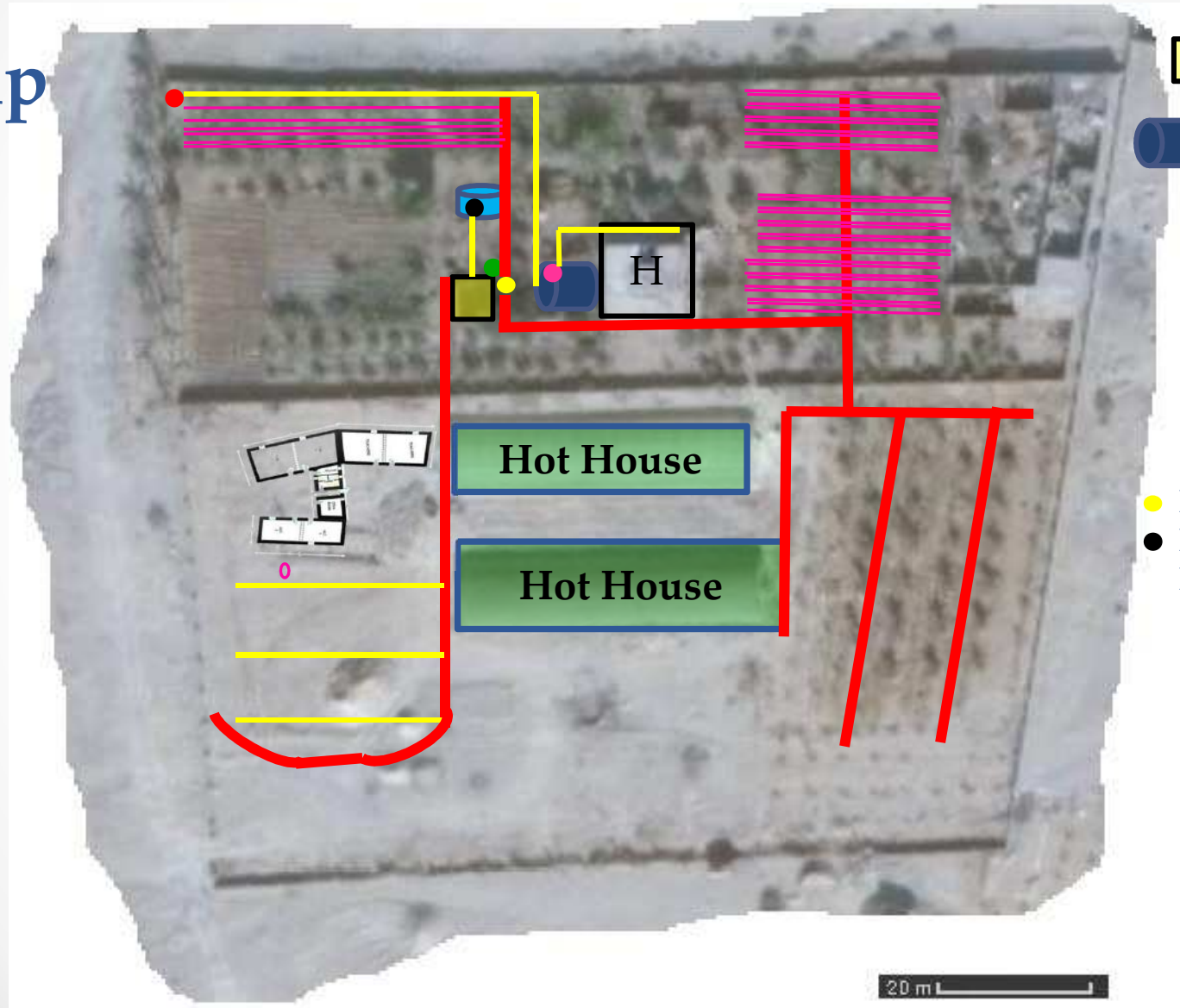
- Pump 1
- Pump 2
- Pump 3
- Pump 4
- Pump 5

Tank

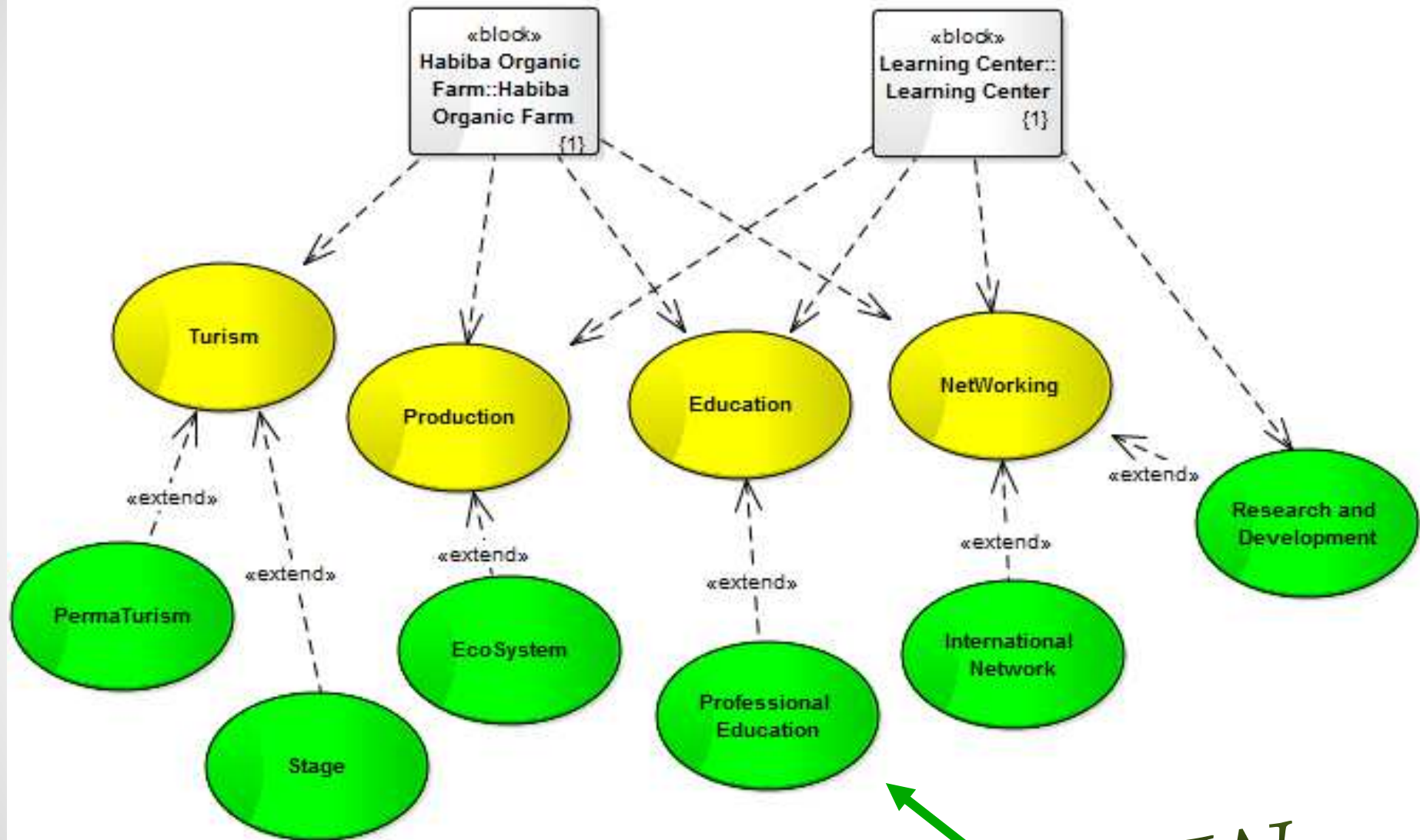
- Water Tank 1
- Water tank 2

Pipe

- Pipe 1
- Pipe 2
- Pipe 3



Activity Map



NEW



Perma Tourism





Perma Tourism



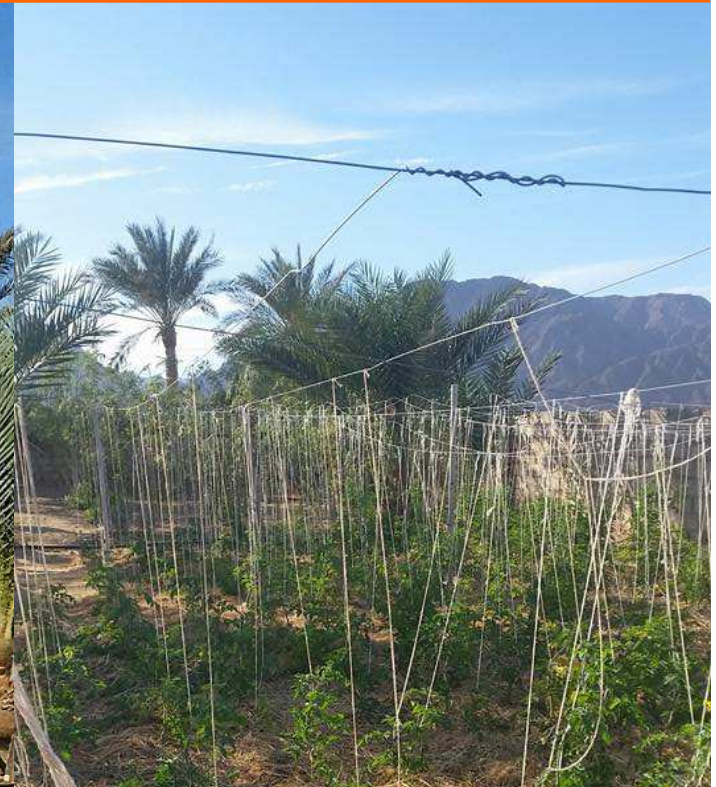


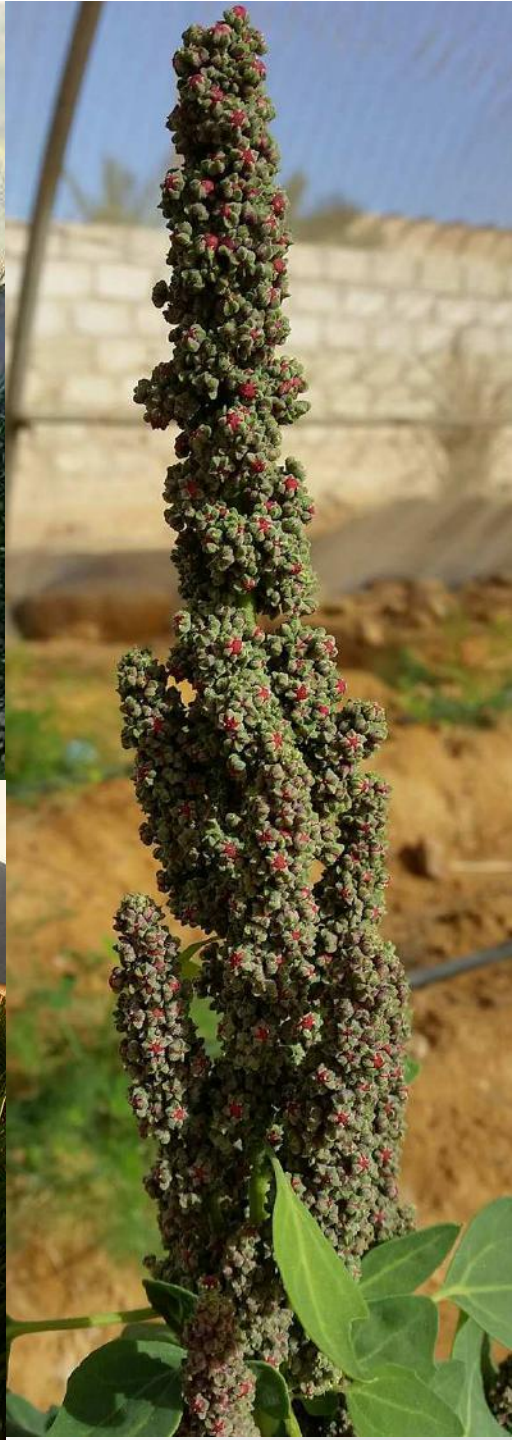
Production





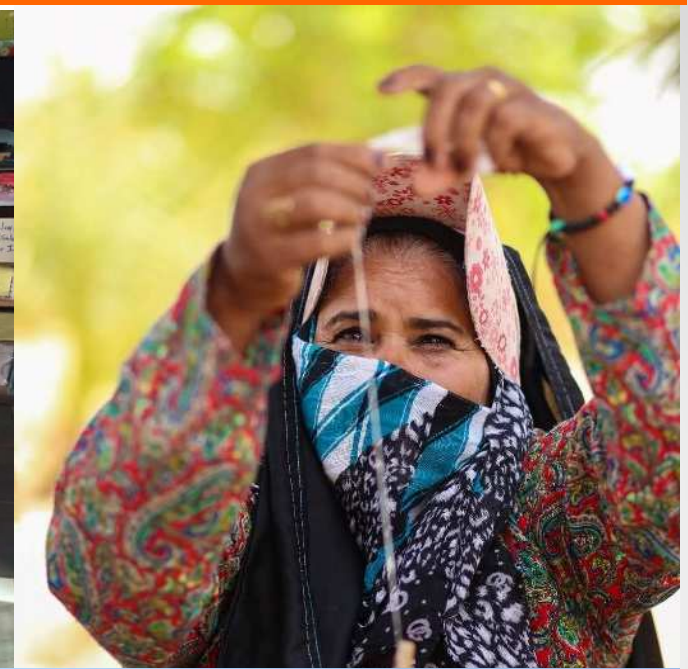
Production



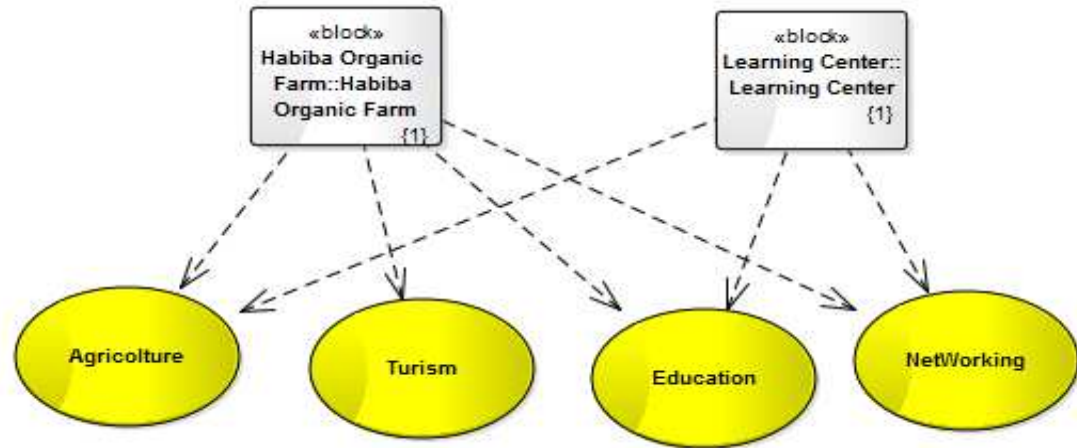




Education



NetWork



Salone del Gusto

PDC

Woofer



**PERMACULTURE
DESIGN CERTIFICATE COURSE**
**15th-27th
DECEMBER
2016**
AT HABIBA ORGANIC FARM

**LEARN TO DESIGN FOR A
SUSTAINABLE FUTURE!**

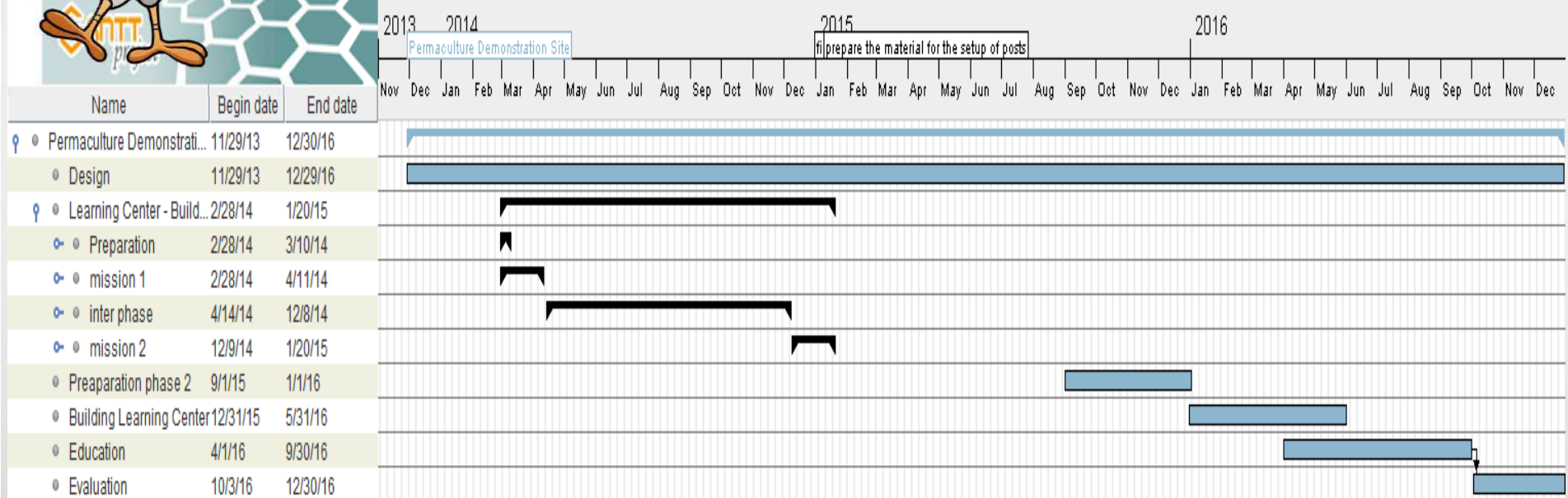
Facilitated by our highly experienced and dedicated permaculture practitioners from Australia, you will gain knowledge, experience and relationships that will last a lifetime.

The Permaculture Design Certificate course is a seventy-two-hour course which provides an introduction to permaculture design as set forth by movement founders Bill Mollison and David Holmgren. Through interactive workshops, field study and presentations in the wonderful setting of Habiba, our PDC will give you globally recognised accreditation as a certified Permaculture Designer.

E-MAIL: info@pdcg.com



Schedule - 2013 to 2017



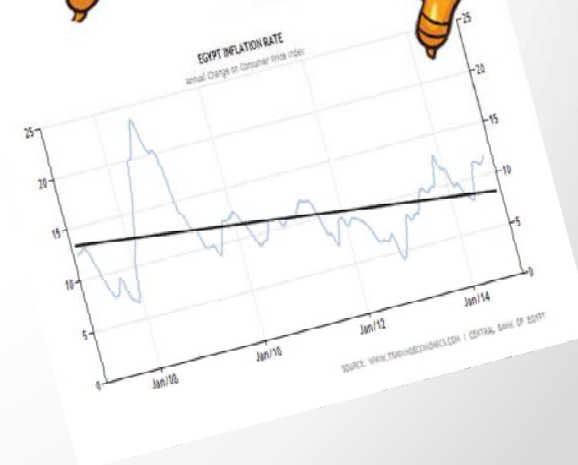


Business Plan

conversion factor

0.11

Voce	Descrizione	Q.tà	P.U. (EGP)	P.Tot. (EGP)	P. tot (€)	Subtotale (€)
Acquisto, costruzione, ristrutturazione immobili						18016.88
Progettazione Centro Polifunzionale (ECONtACT)	corpo	1			3000	
Costruzione del centro polifunzionale	corpo	3	12000	36000	4016.88	
	materiale				8000	
Impianto fotovoltaico e pompa					3000	
Personale						8757.9
Preparazione documenti e progettazione (ECONtACT)	corpo	1			1000	
Direzione lavori (ECONtACT)	corpo	1			2000	
Supporto alla direzione lavori (Habiba)	corpo	1	5000	5000	557.9	
Formatore per corsi arti e mestieri e fotovoltaico	corpo	1			1200	
Formatore locale corsi primaria	corpo				volontario	
Formatore locale corsi arti e mestieri	corpo				1000	
Formatore percorso in Permacultura (ECONtACT)	mesi				1000	
Gestione progetto(ECONtACT)	mesi	11			1500	
Operai Volontari (Woofer)	corpo	5			volontario	
Valutazione (HABIBA)	corpo	1			500	
Acquisti beni o servizi						4100
Arredamento struttura		1			1500	
viaggio e assicurazione	per missione	4		0	1600	
vitto e alloggio	per missione	4		0	1000	
Corsi di formazione						3000
materiale per corsi scuola primaria		3			500	
materiale per corsi arti e mestieri e energie rinnovabili		3		0	2500	
materiale per percorso di permacultura		0	0	0	0	
Mostre ed esposizioni -						500
eventi e mostre fotografiche in Italia		2			500	
Borse di studio o di lavoro -						1200
stage per Progettazione Permacultura		1			1200	
Conferenze e pubblicazioni -						730
Spese generali						730
telefono					40	
trasporti interni					300	
spese bancarie		1	2000	2000	150	
cancelleria					40	
visti e permessi		4	200	800	200	
sub TOTALE				43800	36304.78	
Imprevisti 4% del totale				32	1452.1912	
TOTALE RICHIESTO				43832	37756.9712	





PDC and training performed



TRAINING COURSE ON PHOTOVOLTAIC ENERGY

Come and learn about photovoltaic energy, we will design together the system for the permaculture centre of Habiba Organic Farm







- Theoretical concepts on solar photovoltaics.
- Design of a photovoltaic system
- Installation of the photovoltaic system

- Free for Local people
- 120 euro for foreigners including food and accommodation
- Discounts for Egyptian people

When: 11 - 12 - 13 April 2016
Where: Habiba Organic Farm - Nuweiba, Egypt

Contact and more information: info@econtact.be

PERMACULTURE DESIGN CERTIFICATE COURSE

15th-27th DECEMBER 2016

AT HABIBA ORGANIC FARM

LEARN TO DESIGN FOR A SUSTAINABLE FUTURE!

Facilitated by our highly experienced yet dedicated permaculture practitioners from Habiba, you will gain knowledge, experience and relationships that will last a lifetime.

The Permaculture Design Certificate course is a seven to two-hour course which provides an introduction to permaculture design as set forth by its inventors founders Bill Mollison and David Holmgren. Through interactive workshops, field study and presentations in the wonderful setting of Habiba, our PDC will give you globally recognized accreditation as a certified Permaculture Designer.




EGYPT

FROM DECEMBER 27TH 2015 TO JANUARY 8TH 2016

COME AND LEARN PERMACULTURE WITH US IN THE STUNNING SINAI PENINSULAR!

LEARN SKILLS FOR SUSTAINABLE LIVING AND COMMUNITY RESILIENCE!

CONTRIBUTE TO A COMMITTED AND COURAGEOUS COMMUNITY FARMING INITIATIVE!

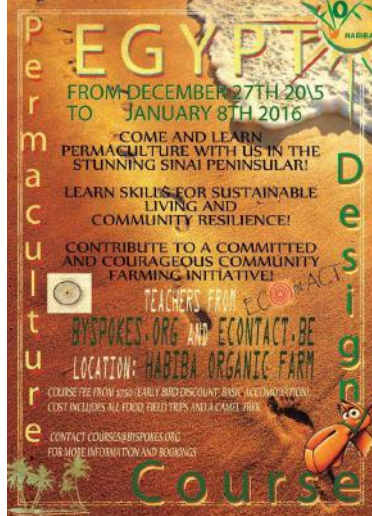
TEACHERS FROM BYSPOKES.ORG AND ECONTACT.BE

LOCATION: HABIBA ORGANIC FARM

COURSE FEE FROM 2550 (EARLY BIRD DISCOUNT) BASIC ACCOMMODATION COST INCLUDES ALL FOOD, FIELD TRIPS AND A CAMEL RIDE!

CONTACT COURSES@BYSPOKES.ORG FOR MORE INFORMATION AND BOOKINGS

Permaculture Designing Course




Natural Building Sinai Egypt

7 days International Workshop with camel ride!

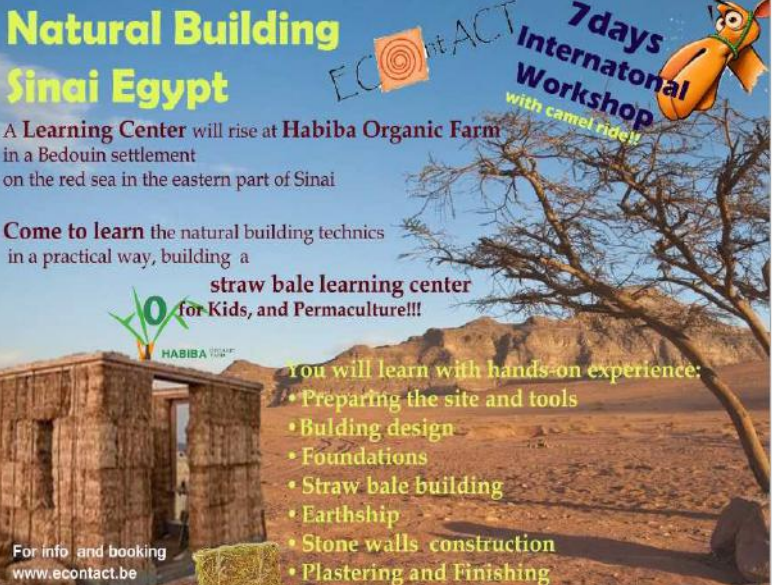
A Learning Center will rise at Habiba Organic Farm in a Bedouin settlement on the red sea in the eastern part of Sinai

Come to learn the natural building technics in a practical way, building a straw bale learning center for Kids, and Permaculture!!!

You will learn with hands-on experience:

- Preparing the site and tools
- Building design
- Foundations
- Straw bale building
- Earthship
- Stone walls construction
- Plastering and Finishing

For info and booking: www.econtact.be



Thanks

L'abilità di utilizzare coscientemente risorse e capacità disponibili libera le persone e permette la connessione con l'ambiente portando a compimento le funzionalità a cui sono naturalmente destinate.